



# WHAT YOU NEED TO KNOW TO CONSIDER Residential Habilitation (Res Hab)

## What is Residential Habilitation?

Residential Habilitation in the Adult Autism Waiver (AAW) provides up to 24 hours per day of support to participants who need more support than they can receive in their own home. The service is designed to enable someone to still reside in the community—rather than an institution—when services provided in a more integrated setting cannot meet their health and safety needs.

Residential Habilitation is available as Community Home living, which is a home or an apartment with staff who rotate by shifts, or as Life Sharing, which is a home shared with a “host” family. A host family is a home where one or more people share their private home with a participant.

Under very specific circumstances, relatives of participants can provide Life Sharing. See the [AAW Provider Information Table](#) for more information.

Residential Habilitation is the most restrictive service provided through the AAW. Residential Habilitation is not a substitute for housing for individuals who do not need intense support. Due to the restrictive nature of this service, approval for Residential Habilitation is limited to individuals who require a high level of support to ensure their health and safety.

## Who is Residential Habilitation appropriate for?

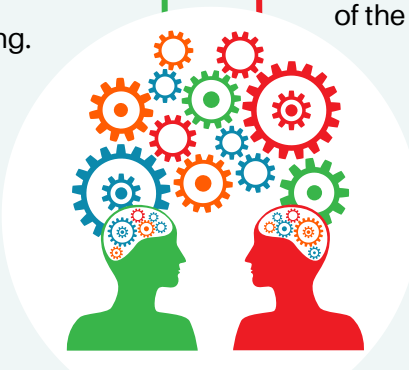


### Residential Habilitation may be appropriate for people who:

- Require supervision up to 24 hours per day.
- Cannot have their health and safety needs met in a less-restrictive setting.
- Need assistance with multiple aspects of daily living for most of the day.
- Need to live in a structured setting.
- Have been unsuccessful using other AAW services to learn the skills necessary to live more independently.

### Residential Habilitation is NOT appropriate for people who:

- Need supervision less than 24 hours a day or only in certain environments.
- Need housing but are otherwise able to safely live alone or with others.
- Can do most aspects of daily living on their own or with help or support for part of the day.
- Have not already attempted an increase of AAW services and/or other less-restrictive supports.



## Has the team already considered these alternatives?

- Remote Supports
- Assistive Technology
- Adding goals and/or increasing other AAW services, such as Specialized Skill Development services – Behavior Specialist, Systematic Skill Building, and Community Support –to help the participant learn the skills necessary to live independently
- Non-waiver supports such as community mental health housing options, if appropriate
- Independent housing options, including living with roommates and/or with Housing and Urban Development (HUD) support  
See also the [AAW Housing Infographic](#)
- Financed housing options, such as a family member helping the participant to buy their own home or transferring a home into the participant’s ownership as their primary residence



## What’s the Process?

Remember to refer to the *AAW Residential Habilitation Services Request Form Guidance*, available from the Regional Office Representative (RO Rep) in addition to the *AAW Residential Habilitation Services Request Form* itself.

### Discuss & Plan

1. Discuss the service and appropriate alternatives with the participant and their team.
2. Alert the ODP/BSASP RO Rep to the participant’s interest/need.
3. Explain the service and the request process in more detail to the participant and their team.

### Request

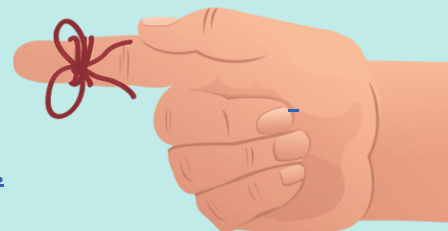
4. Receive the AAW Residential Habilitation Services Request Form and Guidance from the RO Rep.
5. Complete the AAW Residential Habilitation Services Request Form, using the guidance.
6. Submit the Request Form to the RO Rep.
7. Await determination, which will be sent from the RO Rep.

### IF APPROVED: Locate Options

8. Contact available providers to determine their ability and availability to accept the participant.
9. Upon locating a willing provider, determine the requested level of Residential Habilitation and communicate this with the RO Rep.
10. Add the service to the Individual Support Plan (ISP).

## REMEMBER:

- Collect the Room and Board agreement upon admission to a new Residential Habilitation and annually thereafter.
- Participants in Residential Habilitation cannot receive remote SC quarterly monitoring visits and no more than six months can lapse in face-to-face monitoring in the residential habilitation home.
- Document and alert ODP/BSASP to restrictive procedures, which are more common in Residential Habilitation settings than in independent homes. More information can be found on [MyODP](#), such this [Restrictive Interventions infographic](#) and [Restrictive Interventions Guiding Questions and Considerations](#).



This resource was developed by the Office of Developmental Programs, Bureau of Supports for Autism and Special Populations. Please submit questions regarding this Service Guidance Document to ODP at RA-basprovidersupprt@pa.gov.